

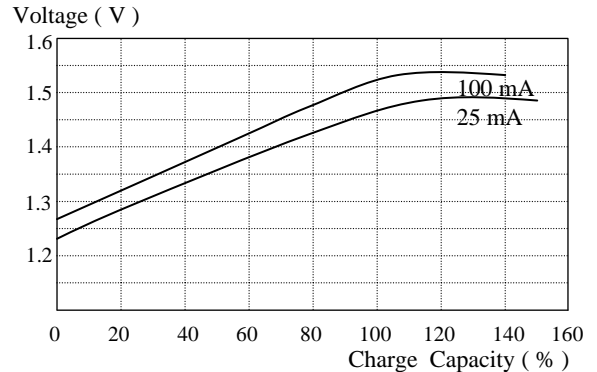
Data Sheet for T-1/3A250

Specifications

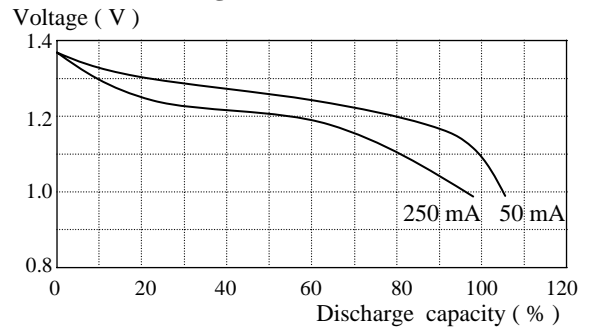
Type :	Rechargeable Nickel Cadmium Standard Cell
Model (P/N) :	T-1/3A250
Nominal Dimension : (with sleeve)	$\Phi = 17.0 \begin{smallmatrix} 0 \\ -0.5 \end{smallmatrix}$ mm $H = 16.5 \pm 0.5$ mm
Applications :	Recommended discharge current 25 to 250 mA
Nominal Voltage :	1.2V
Nominal Capacity :	250 mAh when discharge at 50 mA to 1.0 V at 20°C
Standard Charge :	25 mA for 15 hrs at 20°C
Fast Charge :	100 mA (0.4C) with charge termination control Recommended control parameters Timer: 140 % nominal input
Service Life :	> 500 cycles
Continuous Overcharge :	25 mA maximum permissible current No conspicuous deformation and / or leakage
Weight :	12 g
Internal Resistance :	Max 40 mΩ at 1000 Hz measured within 1 hour after standard charge
Max. Charging Voltage :	1.5 V at 25 mA charging
Ambient Temperature Range	Standard Charge : 0°C to 45°C Fast Charge : 10°C to 45°C Discharge : -20°C to 45°C Storage : -20°C to 45°C

Characteristics

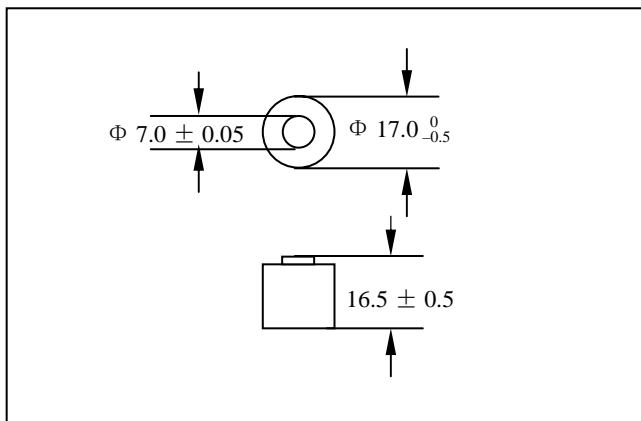
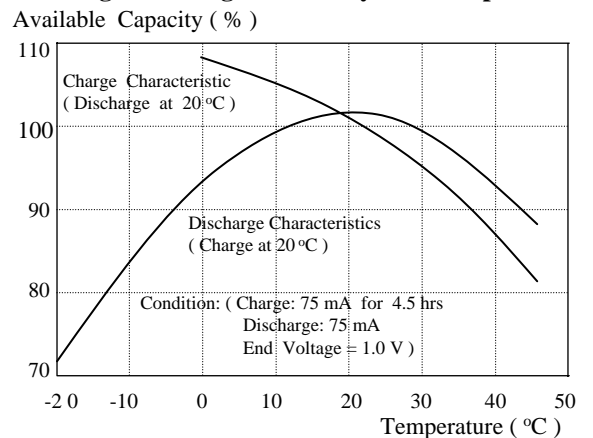
Charge Curves ( 20 °C )



Discharge Curves ( 20 °C )



Charge/Discharge Efficiency vs. Temperature



American Toppower

Add: 2033 Route 130, Unit N, South Brunswick, NJ 08852.

Manufacturer reserves the right to alter or amend the design, model and specification without prior notice.